

Resume for
WebMD® Intergy PACS
(powered by *IntegradWeb*)

from *WebMD* Practice Services



Objective

To provide outpatient radiology and orthopedic practices with a Web-based PACS to meet their image analysis needs and support their transition to a more efficient, filmless environment.

Qualifications

- Architected from the ground up to harness the power of the Web
- Strict compliance to industry standards and the comprehensive IHE framework
- Strong archiving solution
- Rapid image retrieval
- Query and worklist management
- Supports access to PACS functionality from any location – local or remote – via the Web
- Provides referring physicians access to images and reports over the Internet
- Interfaced to The Medical Manager® and WebMD Intergy® RIS and practice management solutions

Key Development and Installation Highlights

- Each installation is fine-tuned to meet the unique requirements of the facility based on a thorough understanding of the modalities, workflow and distribution needs of the practice.
- Integration with WebMD Intergy and The Medical Manager software enables the PACS to support worklist management from the RIS.
- The system provides support for multiple modalities, including CT, MR, digital X-ray, ultrasound and mammography.
- While the system's full functionality can be available to any user, it also allows various users to be assigned to separate user groups—each with individualized toolsets, access privileges and personal preferences.

Key Technical Characteristics

- The PACS is optimized for the Web with complete image viewing and manipulation without waiting for the entire study to load.
- The system architecture provides redundancy for disaster recovery.
- Current and prior exams can be accessed and loaded for simultaneous, synchronized comparison viewing on single or multiple display configurations.
- Orders and reports from prior exams can be viewed on the PACS, and notes or preliminary reports can be added.

Distinguishing Software Highlights

- Supports multi-pane image views and syncing of multiple images across a study for simultaneous analysis of different views from the same point of interest.
- Provides the ability to create annotations on an image (saved into the full study).
- Integration with WebMD Intergy® RIS supports worklist management.
- Display protocols customized by user and modality.
- New fusion function allows superimposing CT and PET so that Image location and slice thickness are re-calculated similar to MPR re-slicing. Independent CT and PET windowing allows users to fine-tune the displayed image.
- Variable Slice Thickness tool suggests an efficient approach to the large data sets navigation. With our Variable Slice Thickness tool, users can define slice thickness on the fly and easily change it any time while reading.
- Dynamic MRI viewing feature allows side by side displaying of images in dynamic MR series from different runs. 'Load by location' feature can be configured as part of the user-defined layout.
- On an ultrasound study, an ROI tool displays perimeter and area measurements.
- Store and Forward configuration provides multi-site installations with a cost-effective storage solution for remote sites. Remote sites can store images for a configured period of time. Images are copied to the central storage at a scheduled time of day where all images are then backed up. Images are maintained at the local sites for a pre-determined period of time for viewing.
- Business Continuity allows remote sites to maintain workflow and productivity even when communication with the central database has been disrupted. In addition to Store and Forward, Business Continuity also utilizes replicated database on remote sites.

References

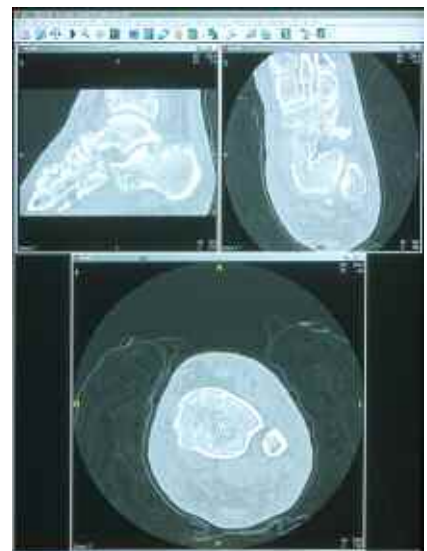
A number of sites across the country are using the Intergy® PACS solutions from WebMD Practice Services. References for these facilities are available upon request.

WebMD Intergy PACS From WebMD Practice Services

Sample ScreenShots



*Intergy
PACS Study
List*



*Intergy PACS
presentation of
CT of ankle and
foot, with 3D
reconstruction*

WebMD Practice Services
2202 N. West Shore Blvd., Suite 300
Tampa, FL 33607-5749

877.WebMD.01 • www.webmdps.com